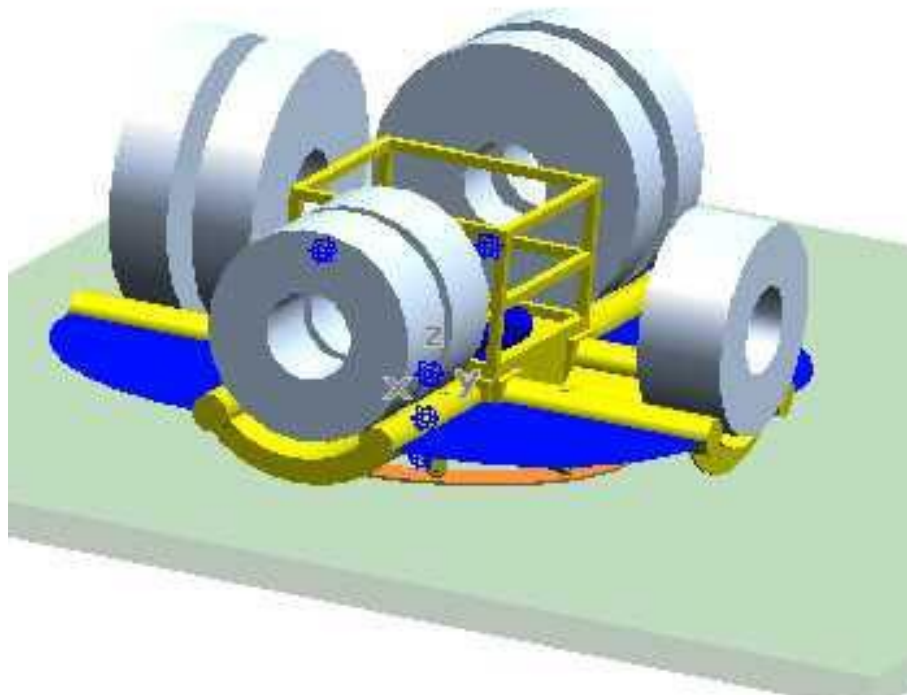


Rotary container for sheet rolls



Utilization and technical description of device:

The device is designed to transport the sheet rolls to their destination by rotating around its own axis and to create reserve of these coils. Device is operated through manually-buttons or the remote control from the cab VZV. Bidirectional rotation of the container is by steps of 90 degrees. Roll Handling is possible by crane or by handling mandrel. The device does not have the indicator of position and can be stopped at any angle from the initial position. The device does not have position lock. Position lock is secured using a twin-screw self-locking gearbox and using the drive of electric motor.

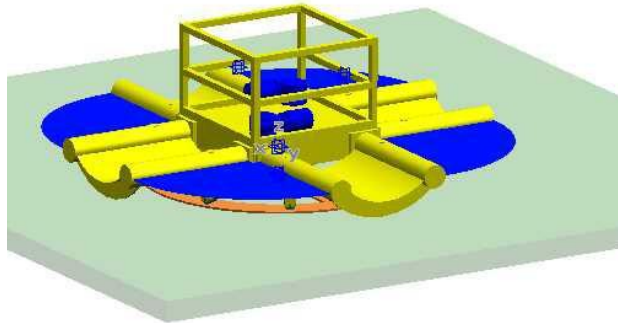
Welded construction of device consists of:

- baseplate with a column around which rotates (attached on ball bearing) eight-arm "table" for the rolls of metal sheet of diameter Ø1000 - 1800 mm
- „table" is supported on 32 wheels with rolling bearings, which circulate on a circular path of the base plate
- console with two electric gearboxes that is attached to the center column
- The device is fixed to the floor with twelve anchors.

Basic technical specification:

Load capacity:	50 000 kg
Number of rolls:	max. 8
Drive:	2 electric motors
Rotary diameter:	ca. 4000 mm
Control:	hand buttons or remote control

Rotary container for sheet rolls



Realization:
Siemens Elektromotory s.r.o., Frenštát pod Radhoštěm

2004

1 ks